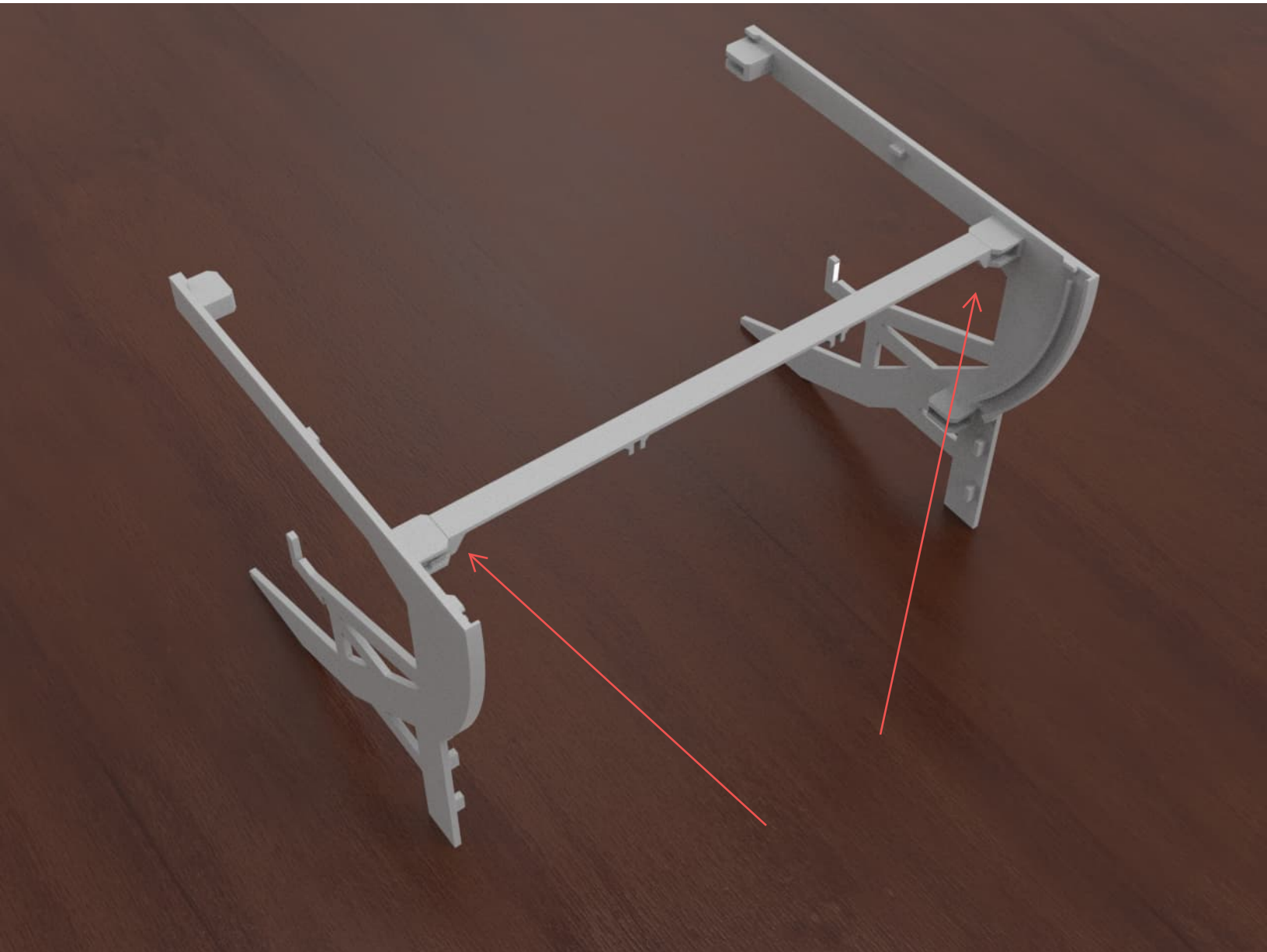


**SUBBUTEOSTADIUM.COM**

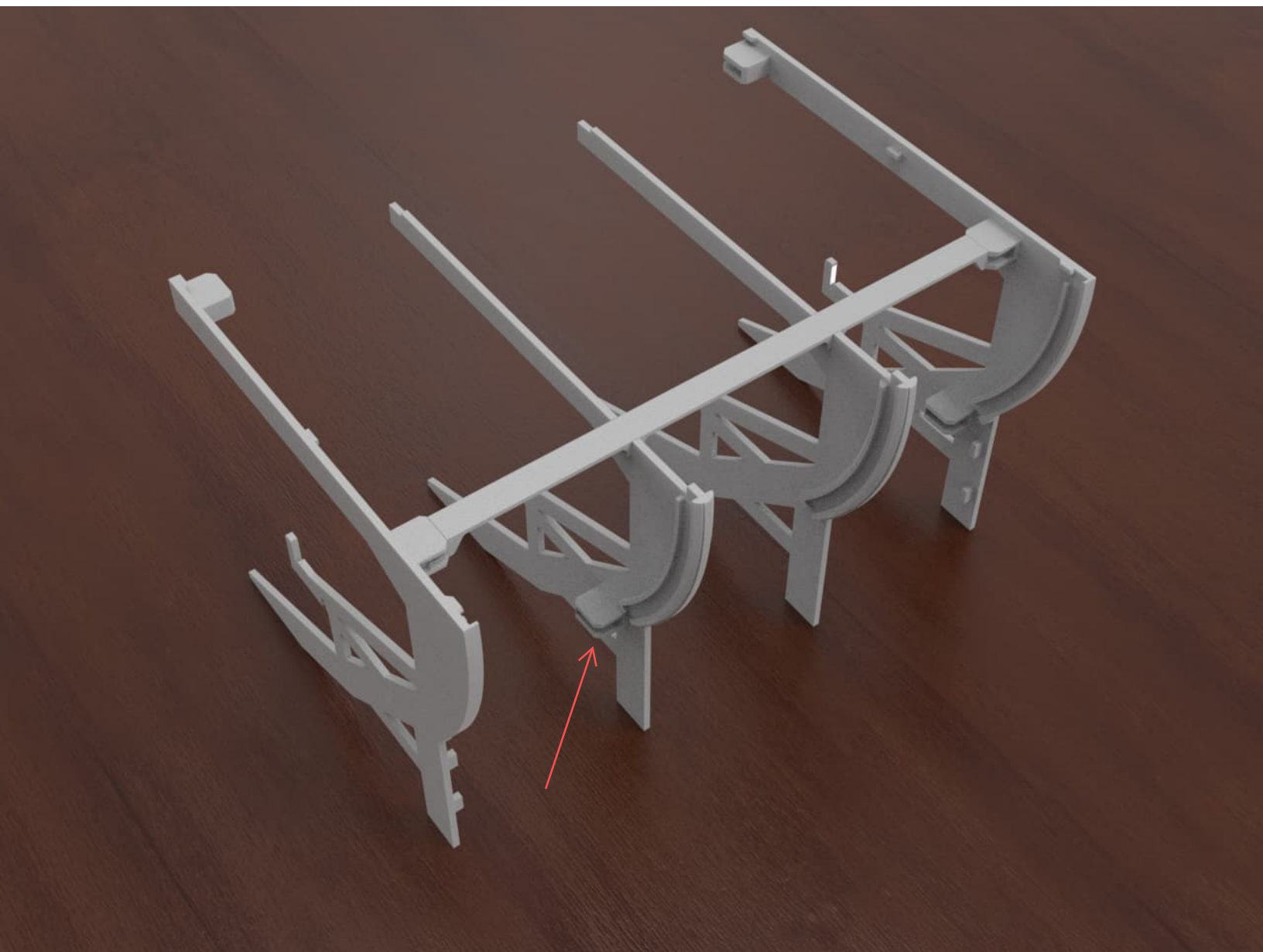
# **P77 GRANDSTAND**



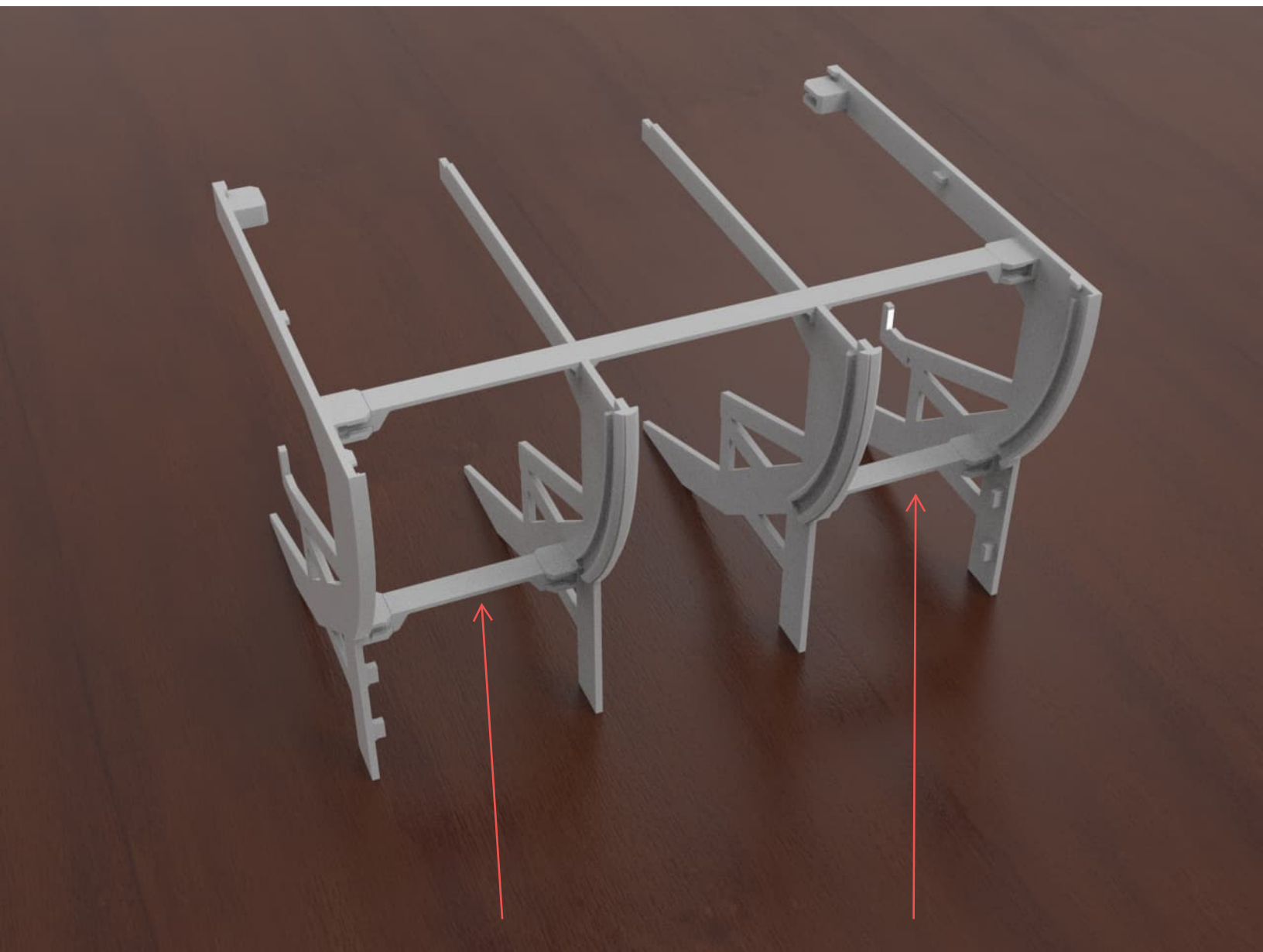
# Assembling the P77 Grandstand



Put the back truss in to connect the left and right sides of the construction

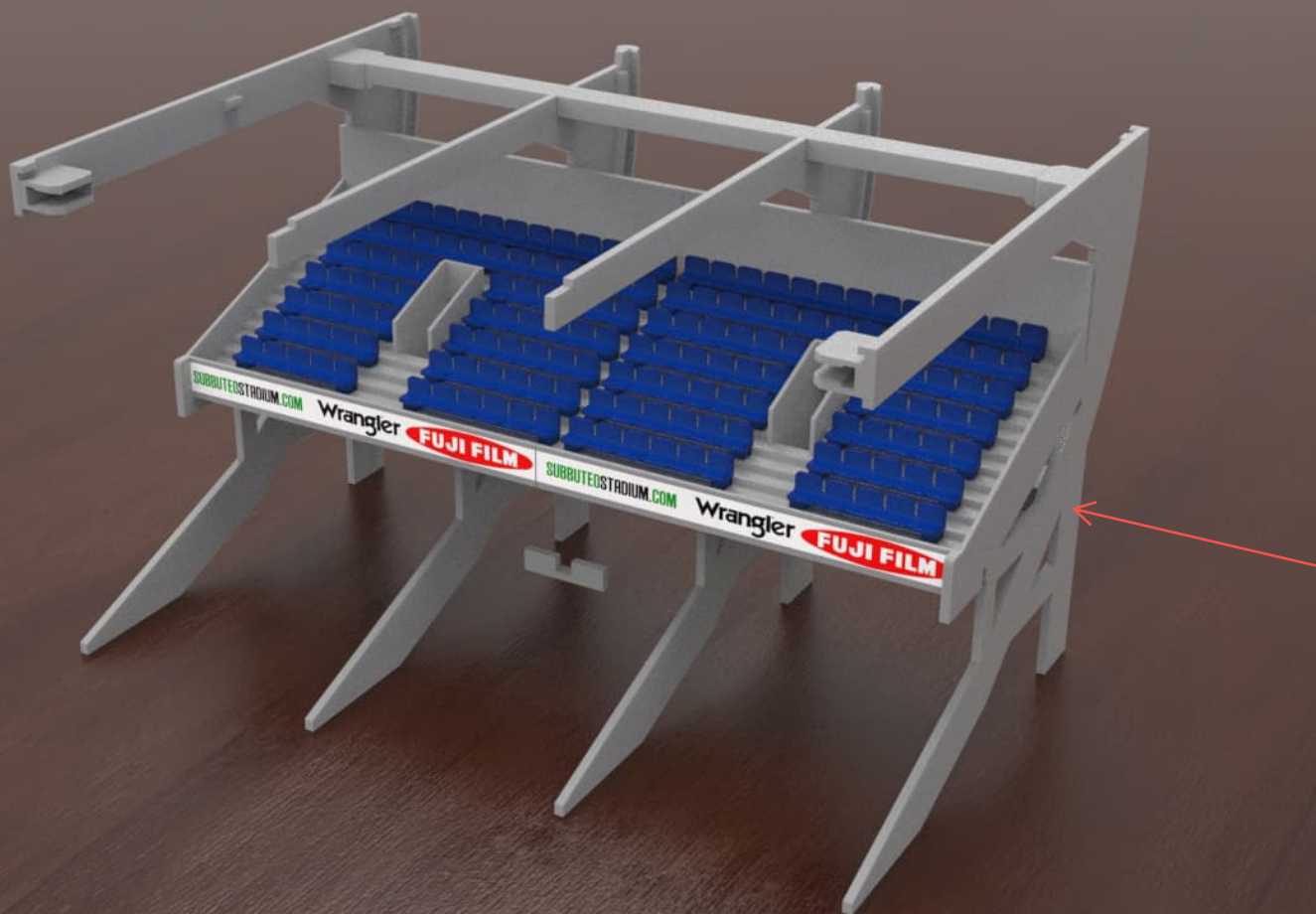


Put the left and right middle part in, connecting to the upper truss

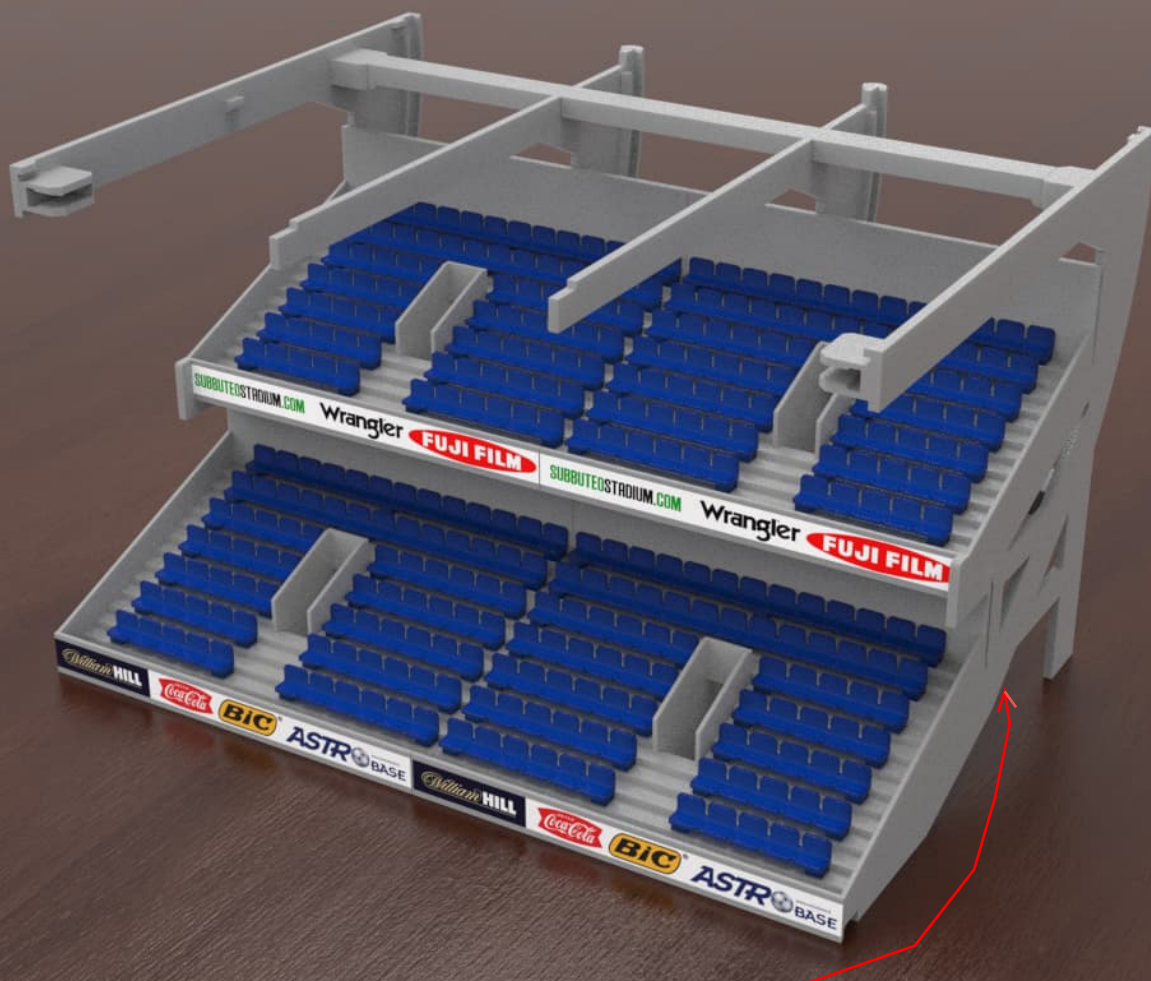


Put the lower left and right small trusses in, connecting the middle parts and the outer parts

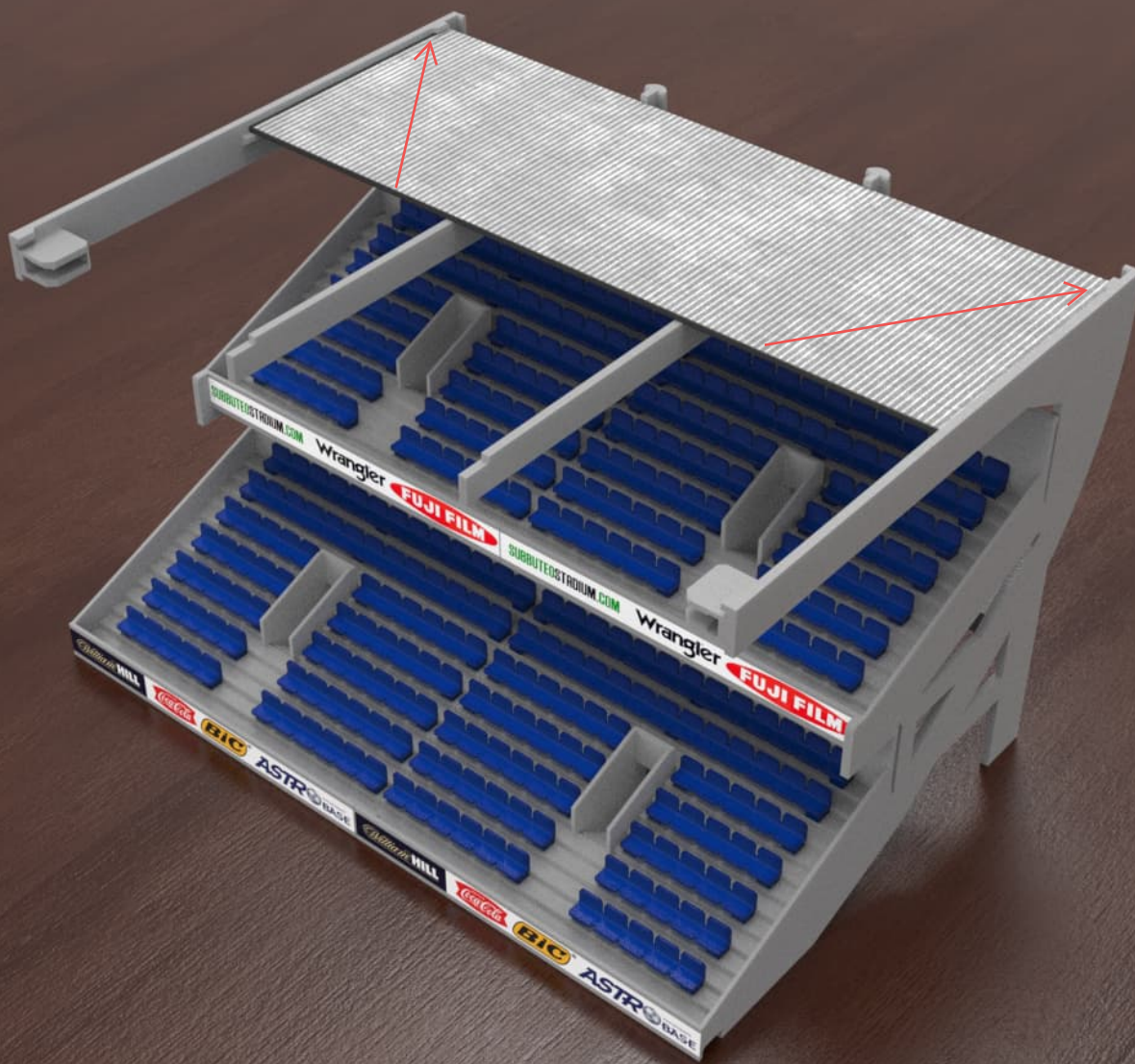




Put the upper terrace in side wards

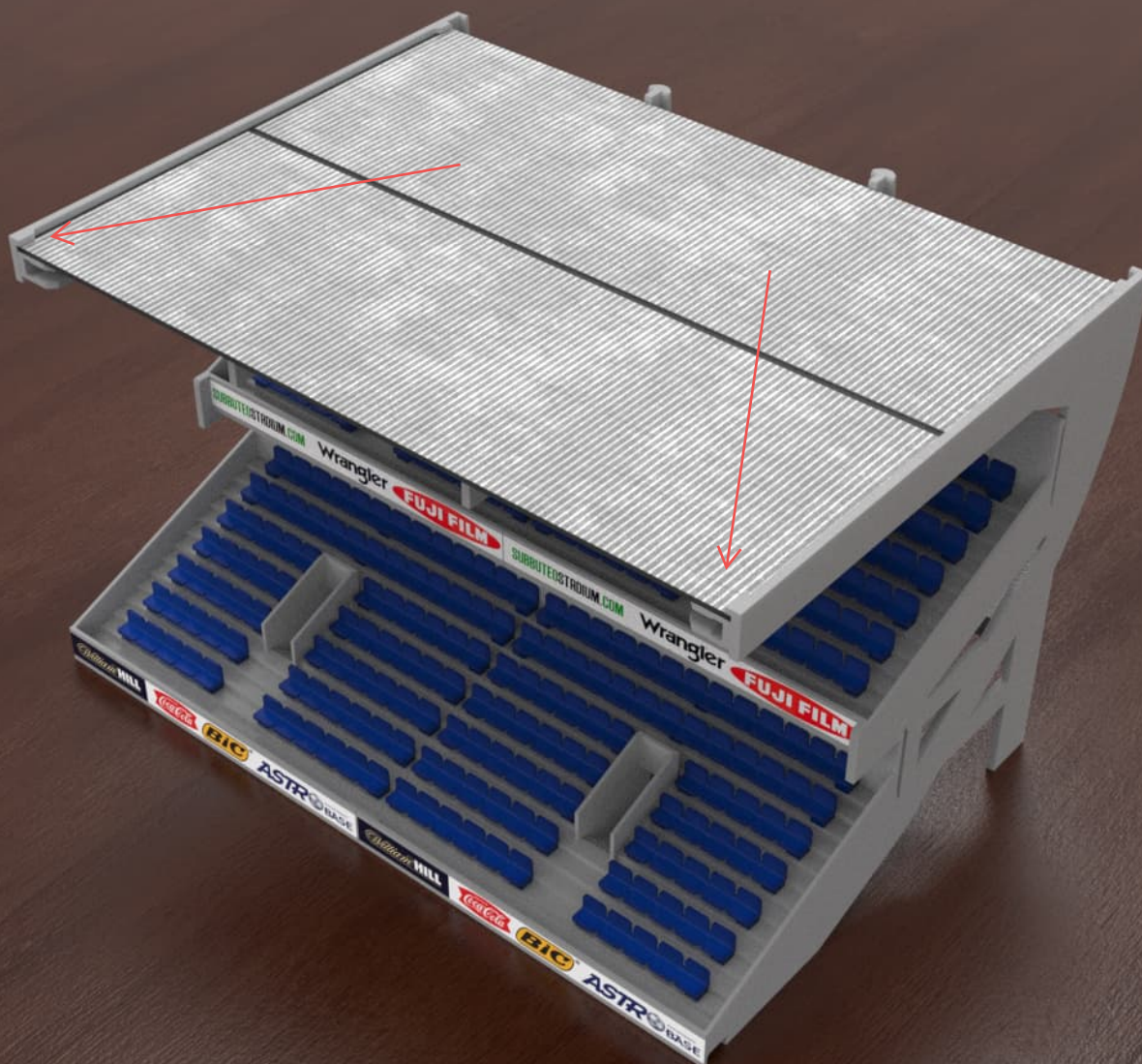


Shove the lower terrace (slightly tilted) in from the front



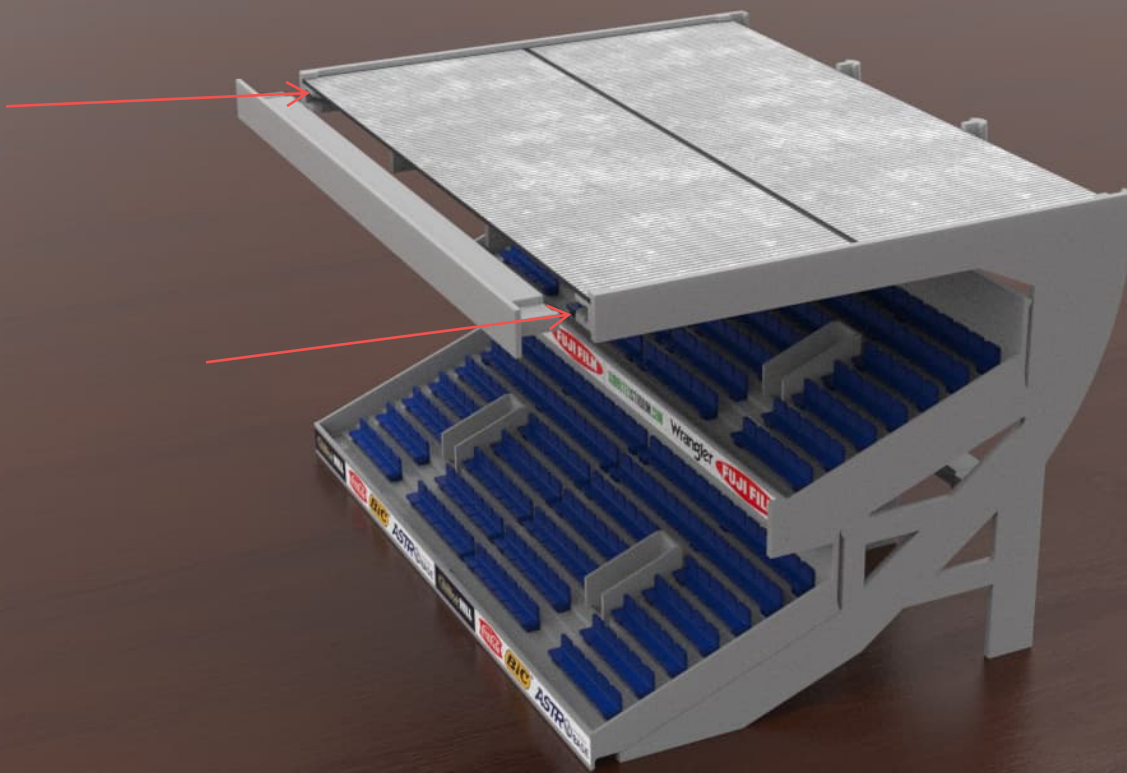
Put the back roof plate in, please pay attention to the small ridges



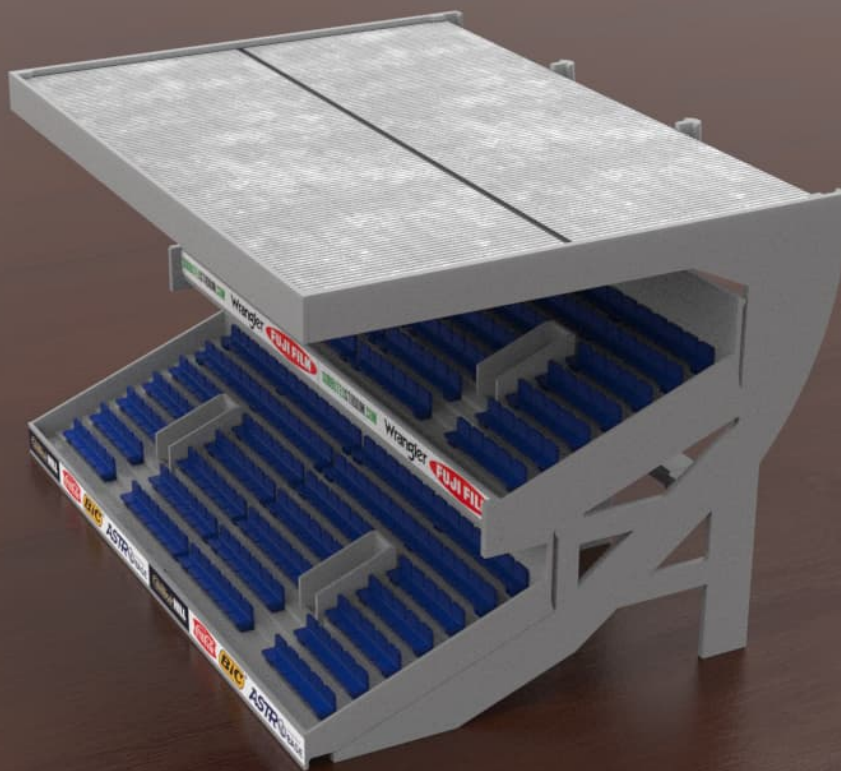


Put the front roof plate in, please pay attention to the small ridges at the front





Put the front truss in





Shove the back panels in, with out force





Ready!

**SUBBUTEOSTADIUM.COM**  
**P77 GRANDSTAND**

